




NRCS Floodplain Easement Program


Sheffield Brook Floodplain Restoration

Lesley R. Sweeney, PE
USDA Natural Resources
Conservation Service





Natural Resources Conservation Service (NRCS)

- A Voluntary Federal Technical Agency
 - Administers the Emergency Watershed Protection Program (EWPP) that was established in 1978
 - In 1996 the EWP Program was amended to add Floodplain Easements (FPE)
- 

EWP Program - Recovery

- EWP Recovery is a response to emergencies created by natural disasters.
- Designed to help people and conserve natural resources by relieving imminent hazards to life and property caused by floods and other natural occurrences.
- Provides financial & technical assistance for installation of recovery measures and for debris removal
- All EWPP projects must have a project sponsor



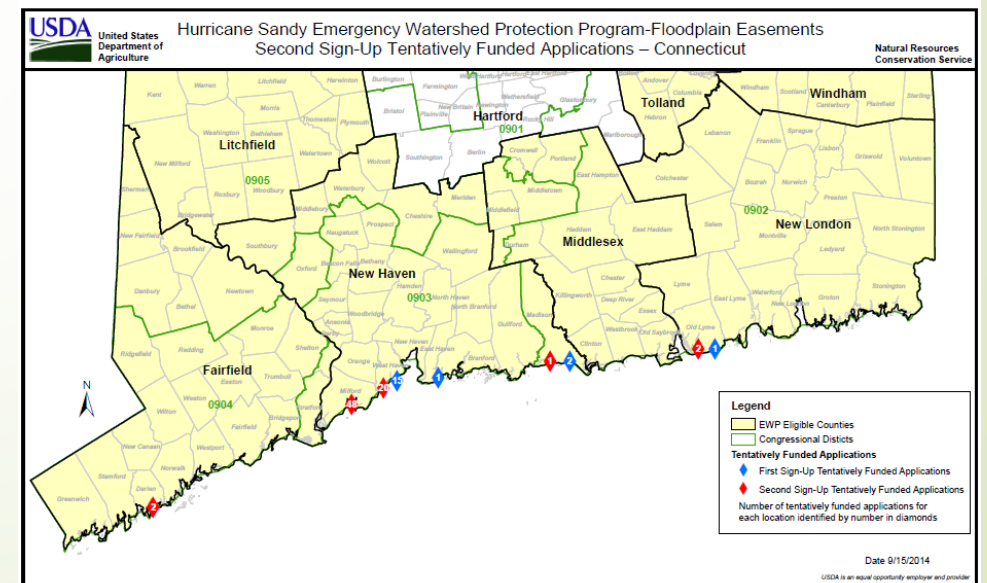
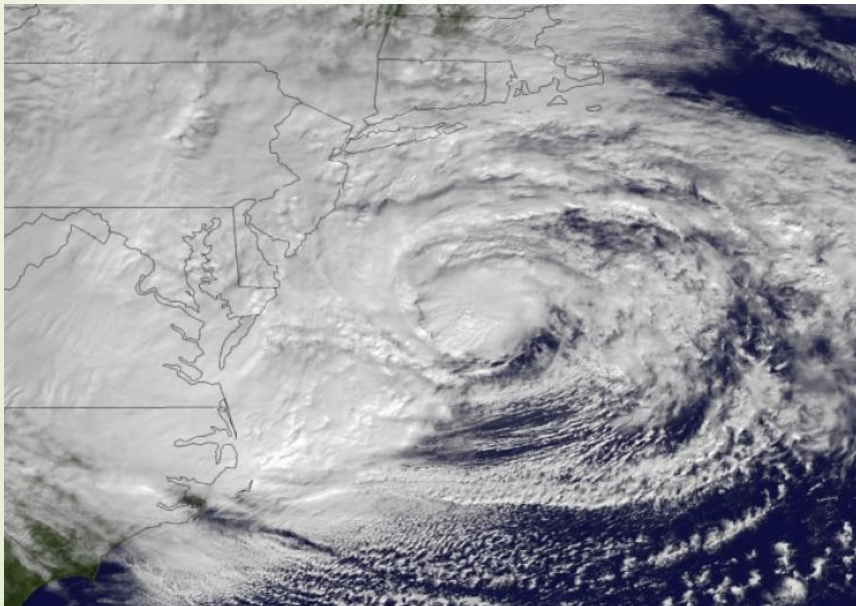
EWPP – Floodplain Easements

- EWPP-FPE is an alternative measure to EWPP recovery when it is more economical than recovery
- Permanent easements purchased on eligible sites
- **Goal is to restore floodplain** functions and values to **natural conditions** to the greatest extent possible
- Structures within the easement must be removed



EWPP-FPE Hurricane Sandy Relief

- \$179 million in funding for floodplain easements to help victims of Sandy and mitigate the effects of future storms
- 96 applications were tentatively funded in Connecticut
- Applicants must meet Landowner and Land Eligibility Requirements



Hurricane Sandy Land Eligibility for FPE

- Must be within a county where Stafford Act disaster declaration was made as a result of Hurricane Sandy
- Must not be in FEMA "Coastal" Flood Zones (V, VE, V1-30)
- Documentation of flood damage from Hurricane Sandy



Sheffield Brook Initial Floodplain Easement

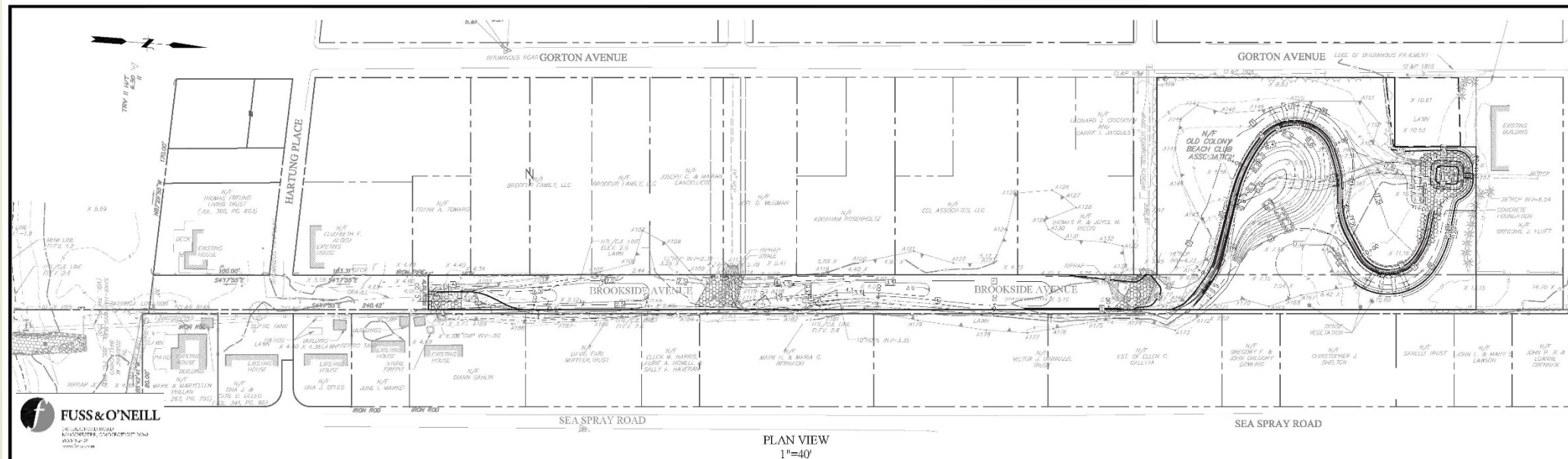
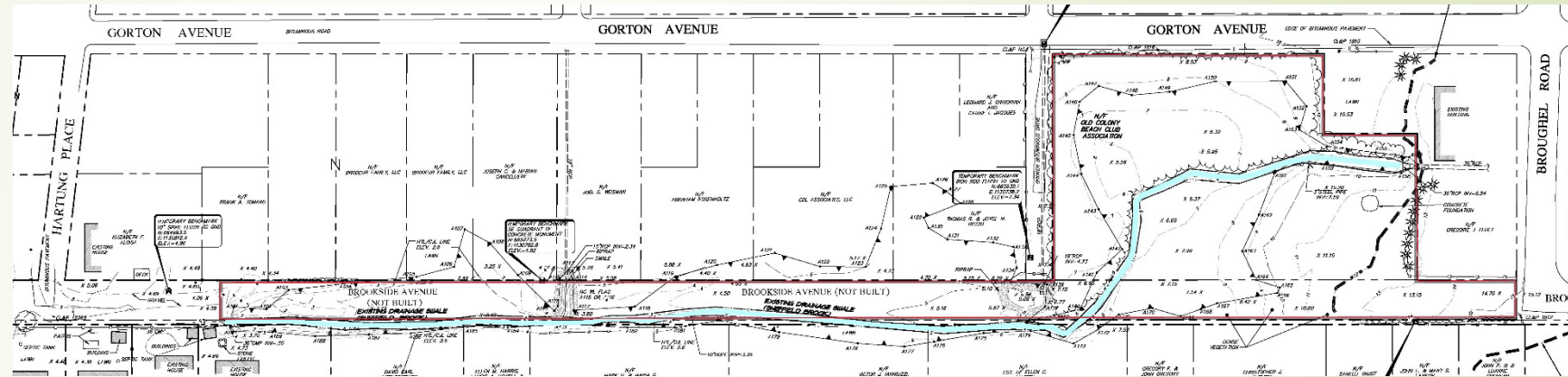
- Sheffield Brook was essentially a drainage channel with very limited floodplain.
- The brook then flowed into an undersized pipe and then into Long Island Sound



Sheffield Brook frequently flooded a densely populated neighborhood.



Sheffield Brook Final Floodplain Easement and Design



Goals of the Sheffield Brook Project

- Restore Floodplain and wetland areas
- Reduce the flooding frequency of adjacent streets, homes and properties

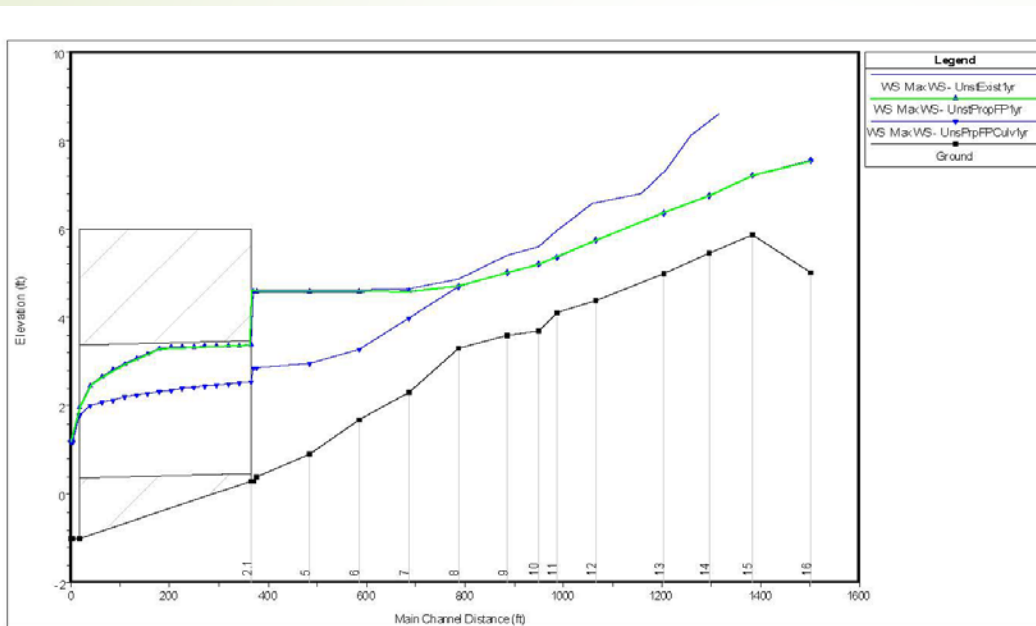


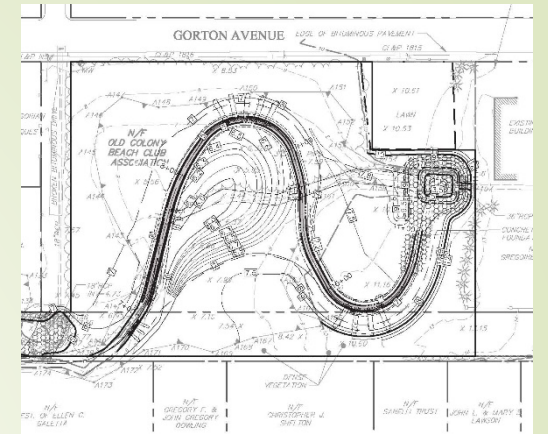
Figure 3-3. Existing and Proposed Conditions Water Surface Profiles for the 1-year Flood Event



Figure 3-8 HEC-RAS Modeled Proposed Conditions (with Twin Culverts) 2-Year Flood Extents

Sheffield Brook Construction

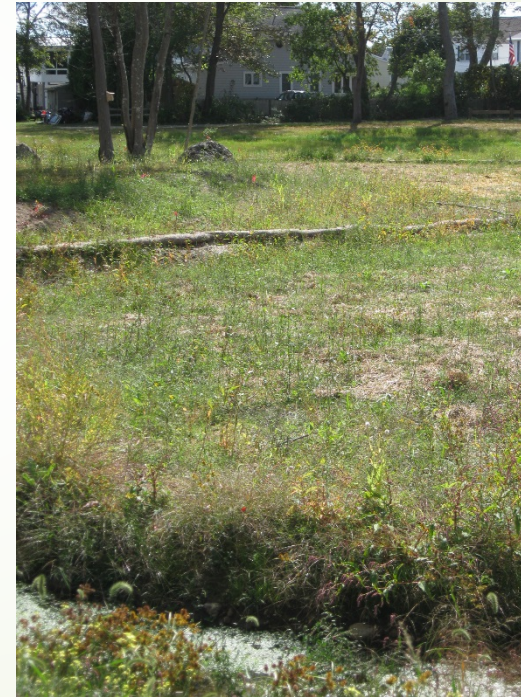
Northern End



BEFORE



DURING

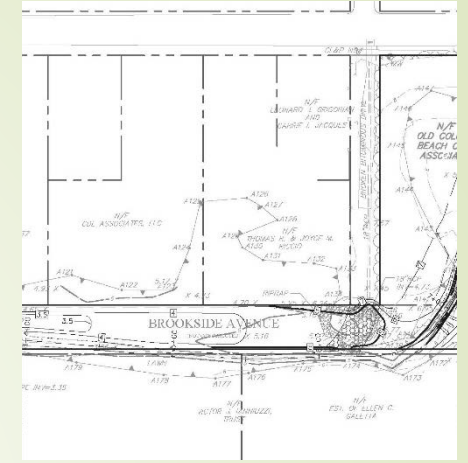


AFTER



Sheffield Brook Construction

Downstream of Station 6+00



BEFORE



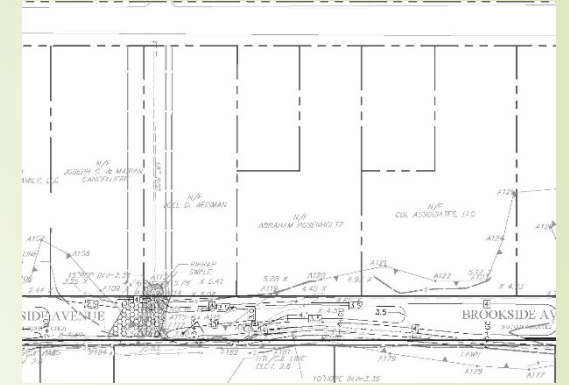
DURING



AFTER

Sheffield Brook Construction

Upstream of Station 2+00



BEGINNING



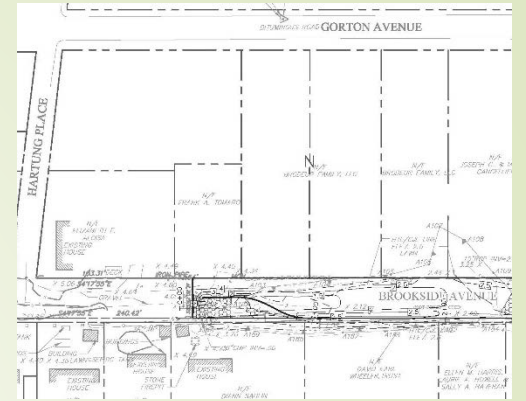
DURING



AFTER

Sheffield Brook Construction

Southern end



BEFORE



DURING



NEAR COMPLETION



AFTER

References and Contacts

- Lesley R. Sweeney

Email: lesley.sweeney@ct.usda.gov

Phone: (860)871-4025

- Connecticut website for the EWP Program

<https://www.nrcs.usda.gov/wps/portal/nrcs/main/ct/programs/financial/ewp/>

- EWPP – Floodplain Easements Contacts

Arthur Ramthun, State Conservation Engineer

Email: arthur.ramthun@ct.usda.gov

Phone: (860) 871-4030

Kristin Walker


Email: carol.donzella@ct.usda.gov

Phone: (860) 871-4033

Carol Donzella

Email: carol.donzella@ct.usda.gov

Phone: (203) 859-7000



Non-Discrimination Statement

In accordance with Federal civil rights law and U.S. Department of Agriculture (USDA) civil rights regulations and policies, the USDA, its Agencies, offices, and employees, and institutions participating in or administering USDA programs are prohibited from discriminating based on race, color, national origin, religion, sex, gender identity (including gender expression), sexual orientation, disability, age, marital status, family/parental status, income derived from a public assistance program, political beliefs, or reprisal or retaliation for prior civil rights activity, in any program or activity conducted or funded by USDA (not all bases apply to all programs). Remedies and complaint filing deadlines vary by program or incident.

Persons with disabilities who require alternative means of communication for program information (e.g., Braille, large print, audiotape, American Sign Language, etc.) should contact the responsible Agency or USDA's TARGET Center at (202) 720-2600 (voice and TTY) or contact USDA through the Federal Relay Service at (800) 877-8339. Additionally, program information may be made available in languages other than English.

To file a program discrimination complaint, complete the USDA Program Discrimination Complaint Form, AD-3027, found online at [How to File a Program Discrimination Complaint](#) and at any USDA office or write a letter addressed to USDA and provide in the letter all of the information requested in the form. To request a copy of the complaint form, call (866) 632-9992. Submit your completed form or letter to USDA by: (1) mail: U.S. Department of Agriculture, Office of the Assistant Secretary for Civil Rights, 1400 Independence Avenue, SW, Washington, D.C. 20250-9410; (2) fax: (202) 690-7442; or (3) email: program.intake@usda.gov.

USDA is an equal opportunity provider, employer, and lender.