

LONG ISLAND SOUND BLUE PLAN

Sustainable Ecosystems - Compatible Uses

Connecticut Association of Flood Managers

October 24, 2018

David Blatt, LWRD



Connecticut Department of Energy and Environmental Protection

Spoiler Alert!



Connecticut Department of Energy and Environmental Protection

LONG ISLAND SOUND **BLUE PLAN**

Sustainable Ecosystems - Compatible Uses

www.ct.gov/deep/lisblueplan



Connecticut Department of Energy and Environmental Protection

This slide intentionally left blank

What is the Blue Plan?

- A **marine spatial plan** for Long Island Sound (mandated by Connecticut statute) that will help to plan for and ensure that **new uses** of the Sound are compatible with **existing, traditional uses** of the Sound and with the **habitats and natural features** that marine life needs to thrive.
- **Vision:** A Long Island Sound where the different human uses and thriving marine life are compatible
- **Goals:**
 1. Healthy Long Island Sound Ecosystem
 2. Effective Decision-Making
 3. Compatibility among Past, Current and Future Ocean Uses



Marine Spatial Planning at International, National, Regional and State Levels, including MA and RI



Using State and Regional Ocean Plans to inform the Blue Plan



Connecticut Department of Energy and Environmental Protection

What is the Blue Plan?

*“Blue Plan legislation (Public Act 15-66) establishes a process by which Connecticut will develop an **inventory of Long Island Sound's natural resources and uses** and, ultimately, a **spatial plan to guide future use** of the Sound's waters and submerged lands”*



Protect Natural
Resources



Protect Traditional
Human Uses



Reduce Future
Conflict



Connecticut Department of Energy and Environmental Protection

Why do we need the Blue Plan?

Multiple uses and increasing demands pose potential conflicts with existing uses



Connecticut Department of Energy and Environmental Protection

Remember This?

- Insufficient mechanisms for managing use of the Sound *as a whole*
- Individual permit applications and proposals set the future course



- Mass. & RI marine spatial plans demonstrate the benefits



Connecticut Department of Energy and Environmental Protection

Blue Plan Statute



Substitute House Bill No. 6839

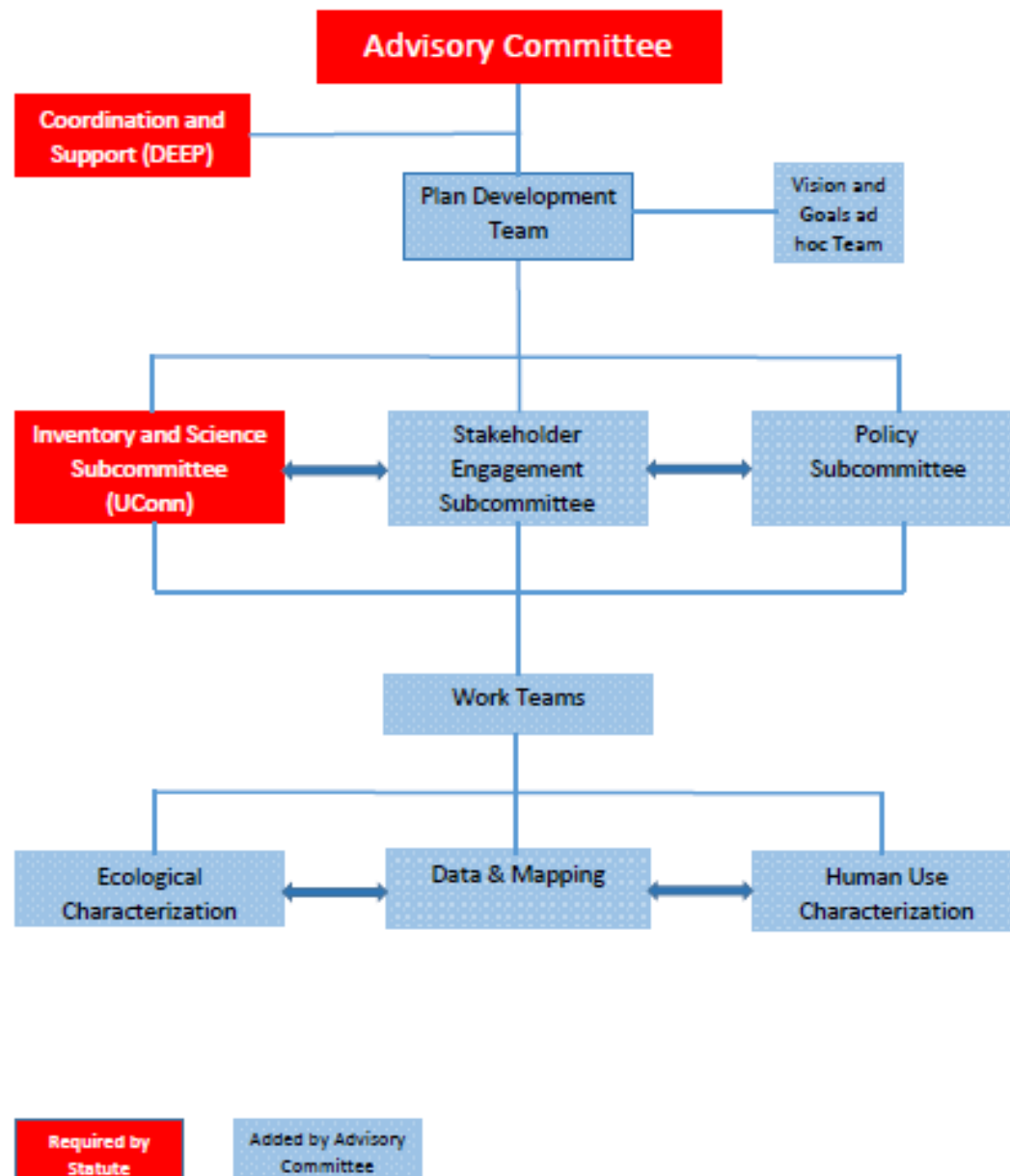
Public Act No. 15-66

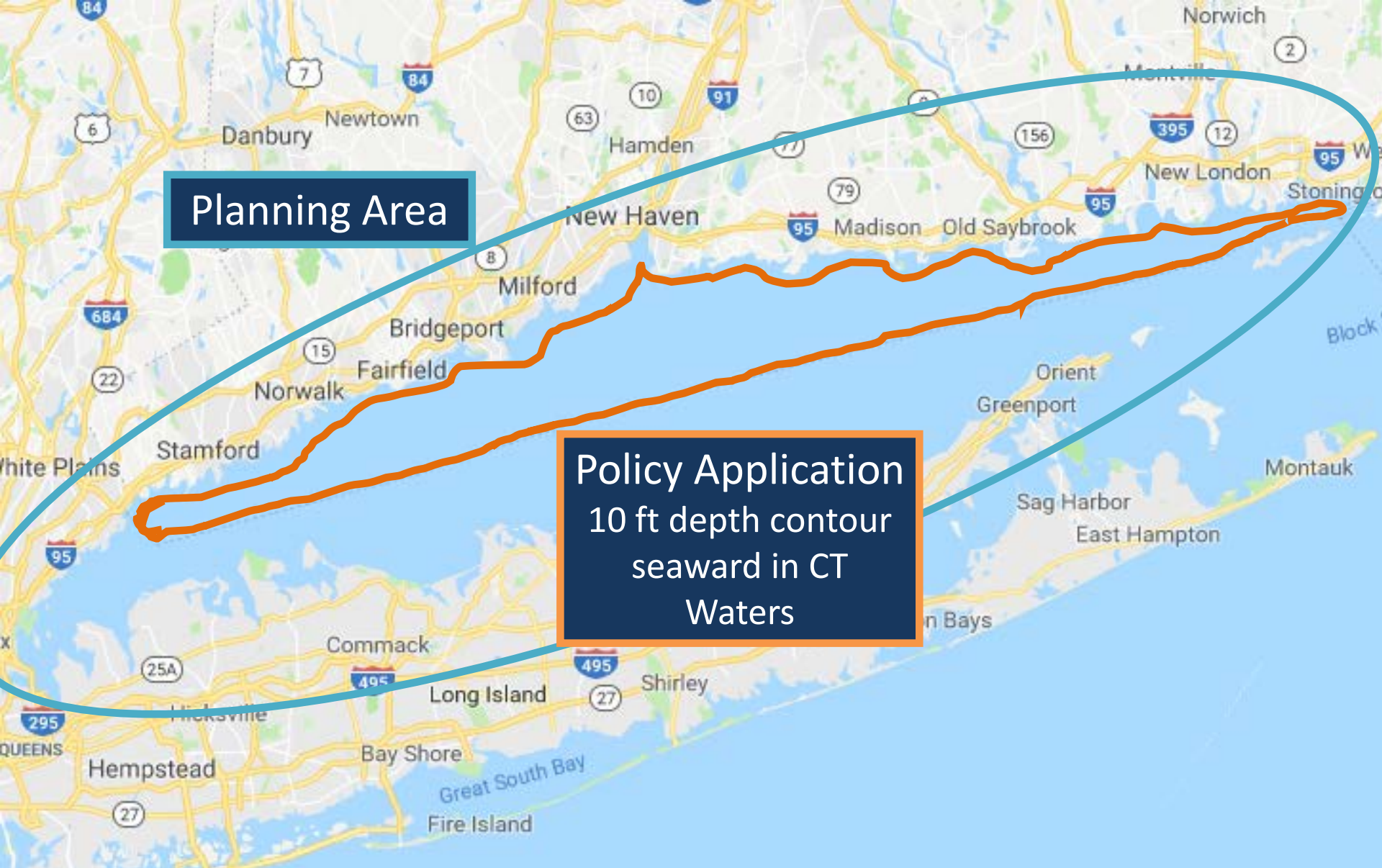
***AN ACT CONCERNING A LONG ISLAND SOUND BLUE PLAN AND
RESOURCE AND USE INVENTORY.***

Be it enacted by the Senate and House of Representatives in General Assembly convened:

Section 1. (NEW) (*Effective July 1, 2015*) (a) There is established a Long Island Sound Resource and Use Inventory and Blue Plan Advisory Committee that shall assist the Commissioner of Energy and Environmental Protection with the drafting of the Long Island Sound Resource and Use Inventory and the Long Island Sound Blue Plan, described in subsection (b) of this section. Such advisory committee shall consist of the following members: (1) The Commissioners of Energy and Environmental Protection, Transportation, and Agriculture, or said commissioners' designees; (2) the Secretary of the

Blue Plan Advisory Committee Organization





Planning Area

Policy Application
10 ft depth contour
seaward in CT
Waters



Connecticut Department of Energy and Environmental Protection

Blue Plan Objectives and Timeline

Collect and Vet Data
on Human
Uses/Natural
Resources

Build an Inventory of
LIS Natural Resources
and Human Uses

Develop Policy Based
off of the Inventory

Combine Key
Findings from
Inventory and Policy
Mechanisms to Form
Blue Plan

Communicate and Engage with Stakeholders/General Public



Connecticut Department of Energy and Environmental Protection



NORTHEAST OCEAN DATA

Maps and data for ocean planning in the northeastern United States

HOME MAPS DATA ABOUT

DATA EXPLORER MARINE TRANSPORTATION ENERGY & INFRASTRUCTURE RECREATION COMMERCIAL FISHING AQUACULTURE CULTURE FISH

Boating Whale Watching SCUBA Recreation Areas Coastal Use Surveys

Zoom to Basemaps Share Print

LEGEND

RECREATION: BOATING

- Recreational Boating Density
- Recreational Boater Routes
- Distance Sailing Races

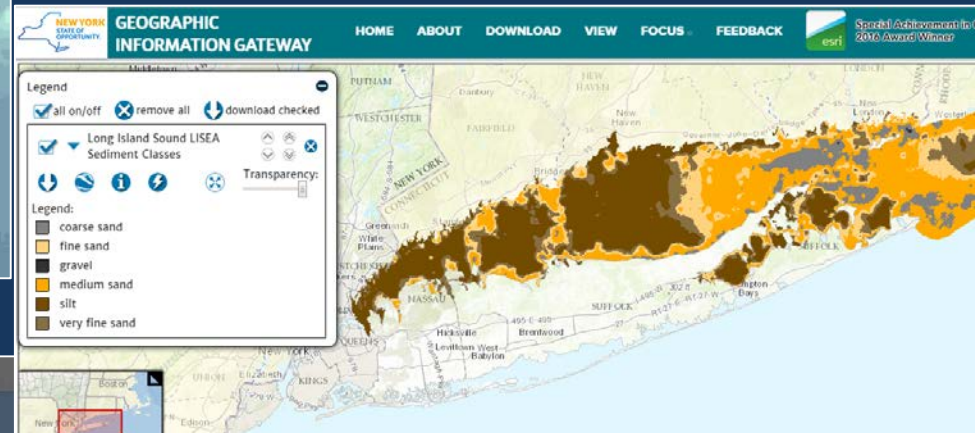
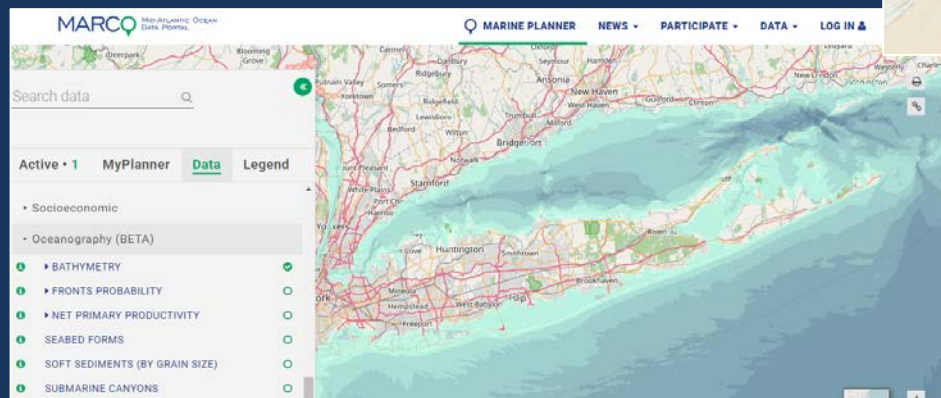
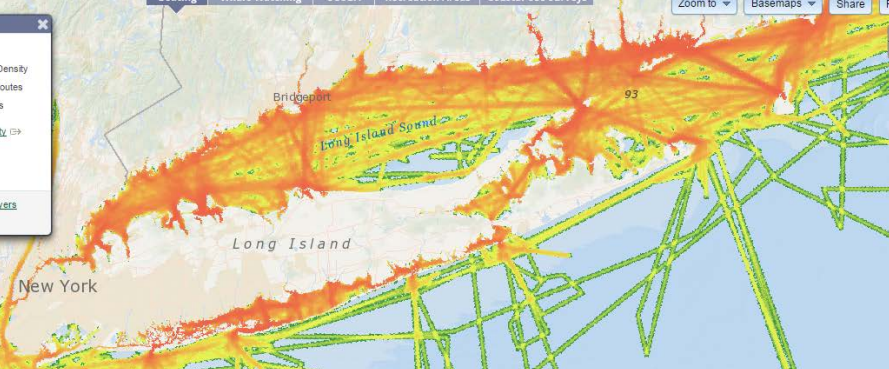
Recreational Boating Density

High

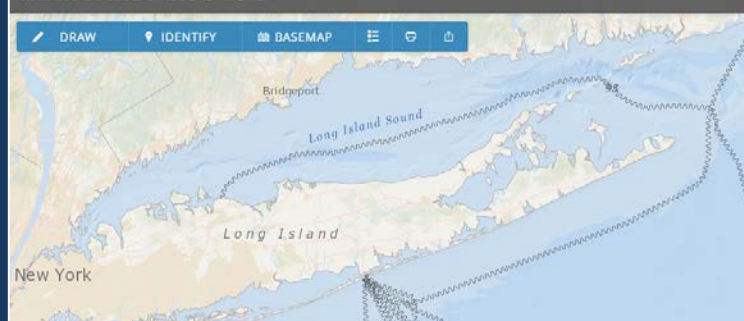
Low

[View this data with other layers](#)

[Link to BOEM ESPIS](#)



Marine Cadastre National Viewer



ALL LAYERS ACTIVE LAYERS

Filter by Tags

- BOEM MfH Planning Areas
- BOEM Oil and Gas Planning Areas
- BOEM Wind Planning Areas
- Clean Water Act

Collect and Vet Data on Human Uses/Natural Resources

■ Held 5 Ecological Webinars:

- Marine Mammals & Sea Turtles
- Birds
- Fish, Shellfish, Zooplankton
- Benthic Biological Habitat
- Benthic Physical Habitat

■ Held 6 Human Use Webinars:

- Recreational Boating
- Recreational Fishing/Waterfowl Hunting
- SCUBA
- Non Consumptive Recreation (beach going, sight seeing, etc.)
- Energy & Telecommunications
- Marine Transportation/Infrastructure

■ In Person Meetings for Other Groups (Aquaculture, National Security, etc.)

Ecological Characterization of Benthic Biological Habitat in Long Island Sound

Welcome, and thank you for joining the webinar today! We will begin shortly.

Please note: Upon joining the webinar, you are **UNMUTED** and are able to address the entire group. However, to minimize audio disruptions, please **mute your phone/computer microphone whenever you are not speaking.**

Throughout the webinar, you will also be able to send messages to the meeting moderator (Ian Yue) or to all participants using the "Chat" feature.

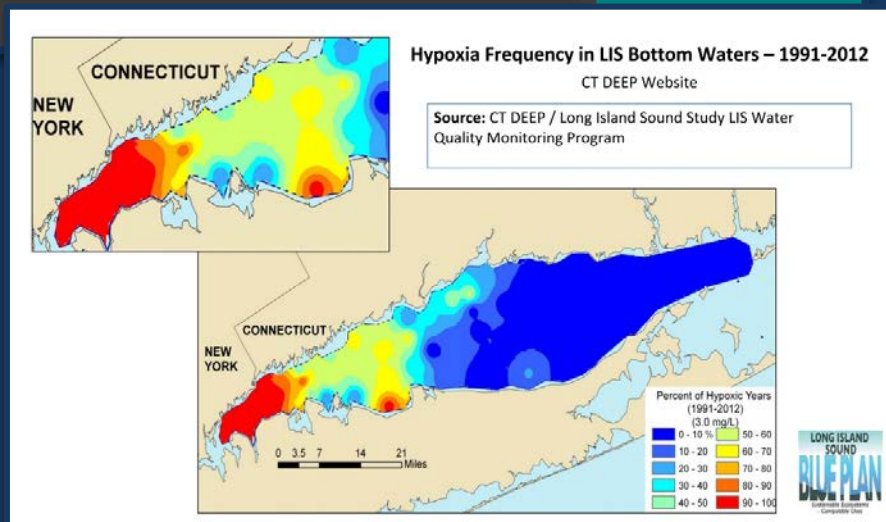
Thank you again for your contribution to the Blue Plan process.
We look forward to hearing from you.

Participants

Name	Joining time (Leaving time)
Don Yue (Moderator)	9:32 AM / 11:00 AM
Travis A.	9:32 AM / 11:00 AM
Cassie Bauer	9:32 AM / 11:00 AM
Kim Holman	9:32 AM / 11:00 AM
Charles Yanish	9:32 AM / 11:00 AM
CT DEEP	9:32 AM / 11:00 AM
Tam Rubben	9:32 AM / 11:00 AM
Molly Chell	9:32 AM / 11:00 AM
Nia Hsu	9:32 AM / 11:00 AM
Christian Fox	9:32 AM / 11:00 AM
Charles de Quilfeldt	9:32 AM / 11:00 AM
Sally Rose	9:32 AM / 11:00 AM

Table of Contents

Activity	Time
Recording Start	00:00:00
AppDesktop Share (1) Start	00:00:00
AppDesktop Share (1) End	00:00:34
AppDesktop Share (2) Start	00:00:36
AppDesktop Share (2) End	00:00:51
AppDesktop Share (3) Start	00:00:51
AppDesktop Share (3) End	00:01:10
AppDesktop Share (4) Start	00:01:10
AppDesktop Share (4) End	00:01:25
Recording End	00:01:25



Connecticut Department of Energy and Environmental Protection

Long Island Sound Resource and Use Inventory

Report by the:
Long Island Sound Inventory and Science Subcommittee of the
Blue Plan Advisory Committee

2018

A blue and white research vessel is sailing on the ocean, leaving a white wake. The vessel is positioned in the lower center of the frame, against a backdrop of a clear blue sky and a calm sea.

LONG ISLAND SOUND
BLUE PLAN

Sustainable Ecosystems - Compatible Uses

Build an Inventory of LIS Natural Resources/Human Uses

Chapter Table of Contents

19.1 Key Data and Map Products	158
19.2 Assessment of Data Quality	163
19.2.1 Sources of Data and Metadata	163
19.2.2 Accuracy, Representativeness, and Relevance of Map Products	164
19.2.3 Data Gaps and Availability of Data to Address Gaps	165
19.3 Relevance	167
19.3.1 Relative Historical Importance	167
19.3.2 Socio-Economic Context	167
19.3.3 Other Notes	168
19.4 References	168
19.5 Appendices	169
19.5.1 List of Maps Used to Inform the Chapter	169
19.5.2 Notes on Stakeholder Engagement	170



Develop Policy Based off of the Inventory

- Sound Wide Policies
- Siting and Performance Standards based on Use/Ecological Resource
- Area Based Priority and Performance Standards (ex. Ecologically Significant Areas)

Blue Plan Human Use Compatibility Matrix: Draft		Shipping	Ferries	Towing	Dredging Footprint	Navigational Dredging	National Security/Public Safety	Cruises	Recreational Boating	SCUBA	Wildlife Watching	Waterfowl
Marine Transportation/Navigation	Shipping											
	Ferries											
	Towing											
	Dredging Footprint											
	Navigational Dredging											

KEY

- = Synergistic
- = Compatible
- = Conditionally Compatible
- = Incompatible/Conflict





Department of ENERGY & ENVIRONMENTAL PROTECTION

Select Language ▼

Translation
Disclaimer

[Home](#)

[About Us](#)

[Programs & Services](#)

[Publications](#)

[Forms](#)

[Contact Us](#)

[ENERGY](#)

[ENVIRONMENTAL QUALITY](#)

[NATURAL RESOURCES](#)

[OUTDOOR RECREATION](#)

[PURA](#)

[Connecticut's Energy Agenda](#)

[Long Island Sound
Energy Efficiency](#)

Long Island Sound Blue Plan Policies

[Blue Plan Home](#)

The first draft of the policies proposed to be included in the Long Island Sound Blue Plan is available for review and comment.

What the Blue Plan Policies Do and Don't Do

The Blue Plan's policies and information will provide the basis for existing permit programs identified by statute to achieve clearer and more certain protection of the economic, cultural, and ecological values of Long Island Sound, including existing traditional human uses and ecologically significant areas. As such, the Blue Plan will serve as a guide to show what the applicable state and local permit decision-making processes will consider and be based upon. This will provide new and better insight for stakeholders and applicants up-front.

The Blue Plan will not create new regulations; rather it will provide greater clarity and guidance for how decisions will be made under specified existing regulatory programs.

Depending on what an application proposes and where the activity would be located, there may be specific actions and/or analyses that an applicant will need to perform that are defined in advance by Blue Plan policies. However, these actions and/or analyses would be the same as those that would normally be determined and required post-submission during the existing permitting process. With the Blue Plan, the need for those actions or analyses will be made clearer up-front, so an applicant can more effectively and efficiently prepare an application.

To achieve clearer and more certain protection of the economic, cultural, and ecological values of Long Island Sound, the Blue Plan will establish new clarity on spatial locations where applications for new uses may have

[Report an
ENVIRONMENTAL
Concern/Problem](#)

[January
Calendar of Events](#)

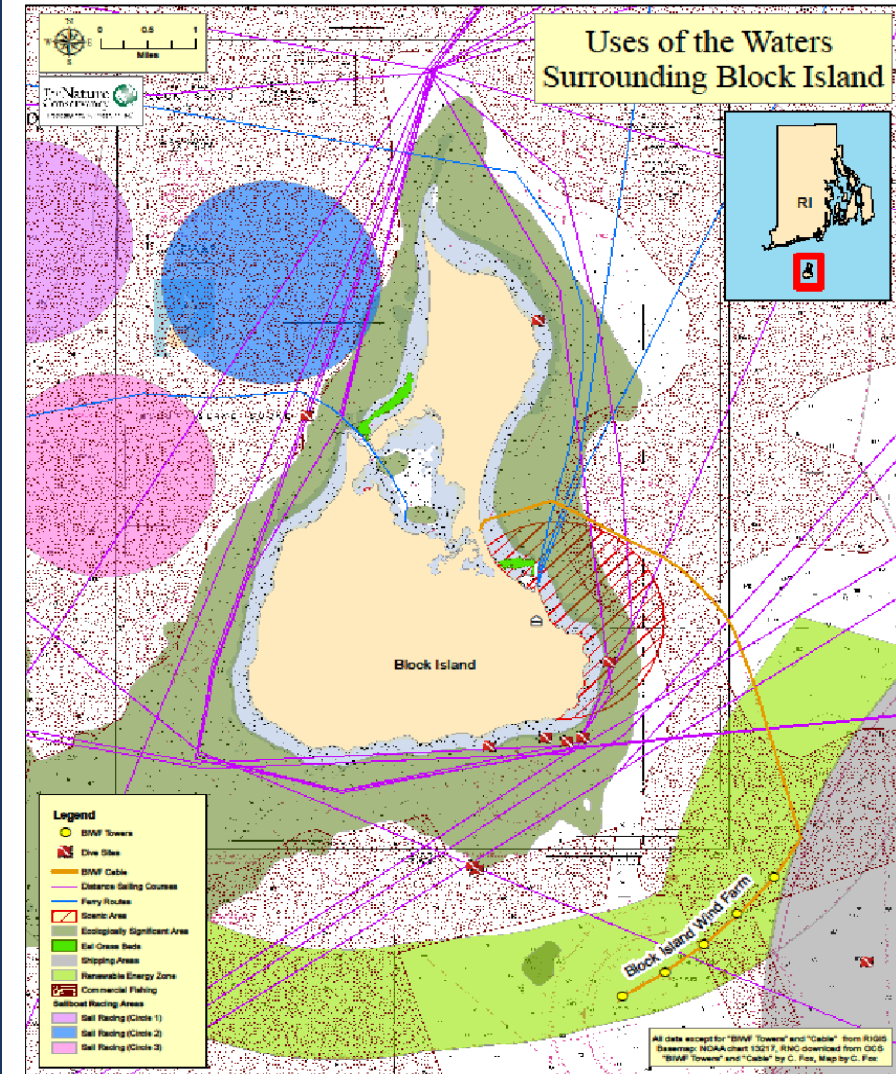
[Laws and
Regulations](#)

Example: Rhode Island Ocean SAMP

Overlay of human uses and natural resources:

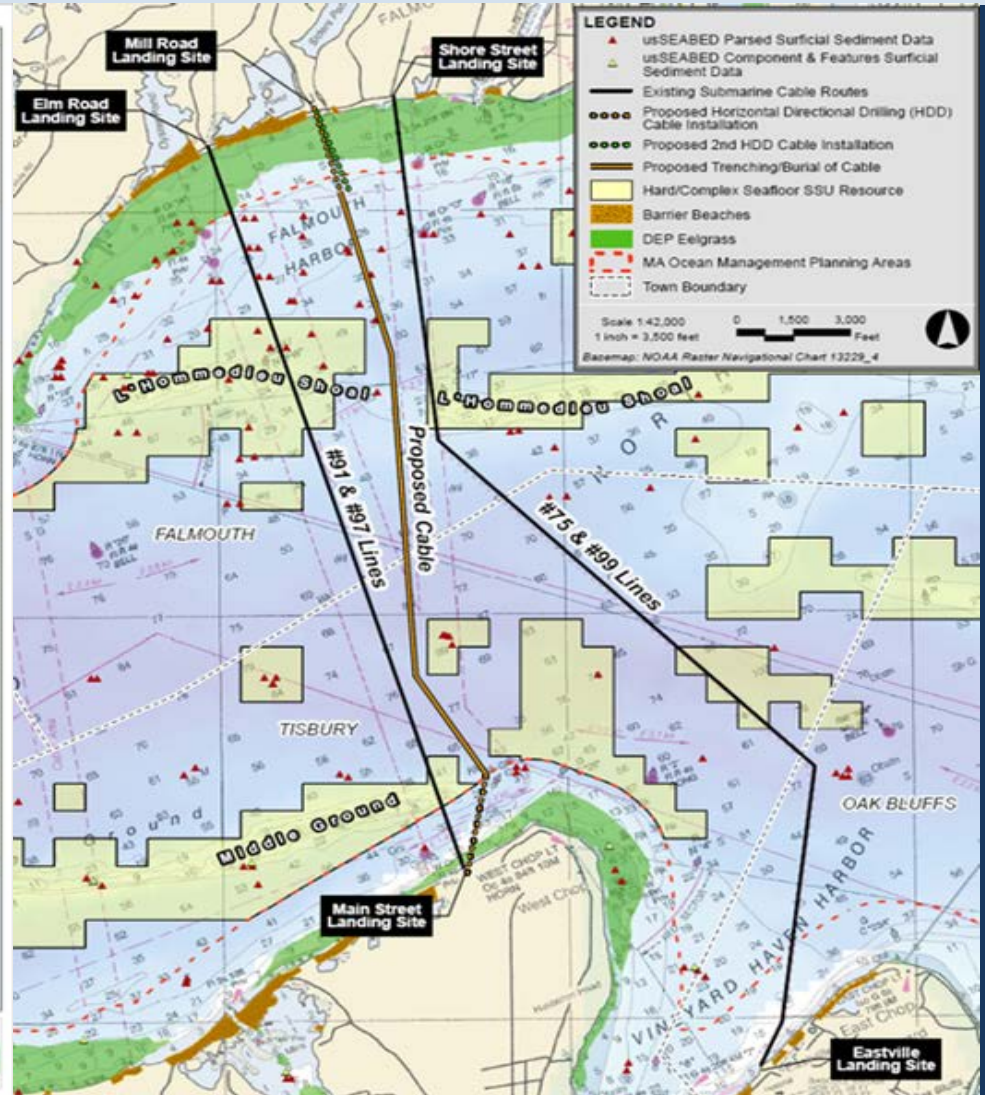
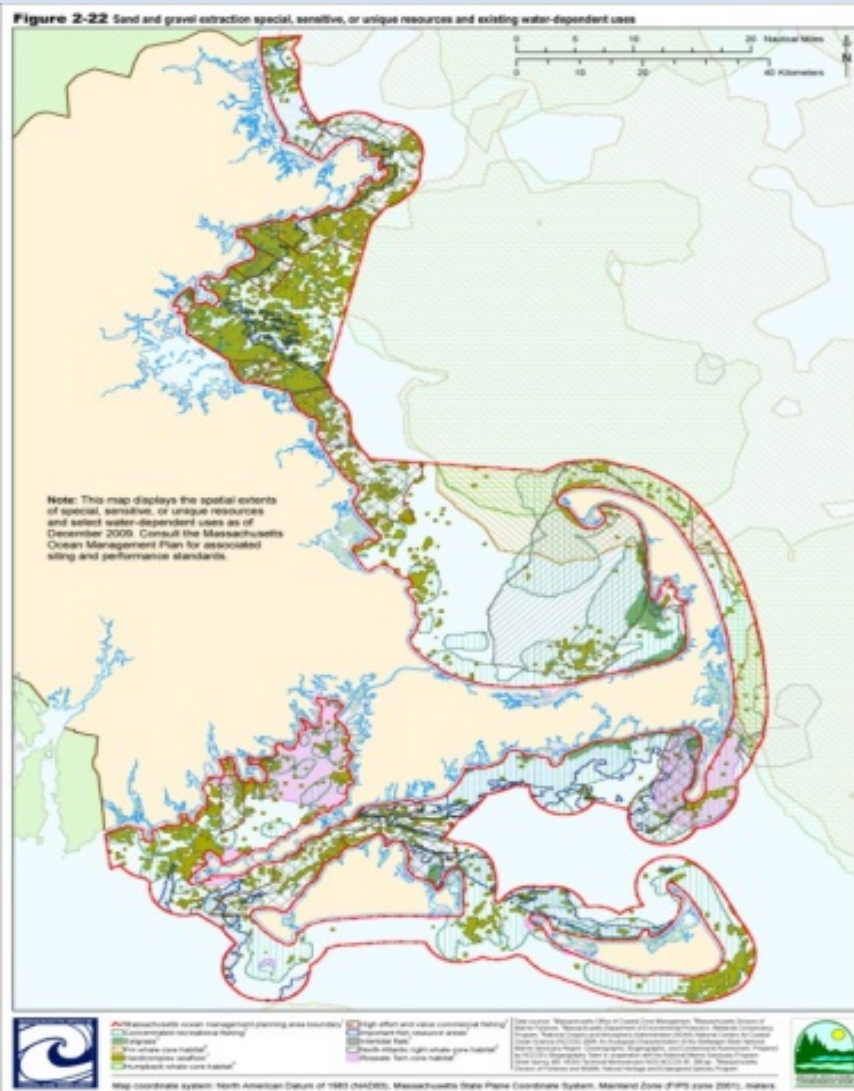
- Popular dive sites (red flags)*
- Sailboat race areas (pink lines)*
- Conservation areas (dark green)*
- Commercial fishing (dotted red)
- Renewable Energy Zone (light green)
- Ferry and other navigation (blue lines)

*Area of Particular Concern:
No offshore development permitted



Connecticut Department of Energy and Environmental Protection

Example: Mass Ocean Plan



Connecticut Department of Energy and Environmental Protection

Communicate and Engage with Stakeholders/General Public

- Public Meetings
 - Stakeholder Group Outreach
- Participatory Mapping
- Social Media and Website Updates
- Factsheets



Connecticut Department of Energy and Environmental Protection

Send comments to
DEEP.BluePlanLIS@ct.gov

or

Participate in Public Meetings and Hearings:

Next Public Meeting: October 30, 2018, DEEP Marine Headquarters, Old Lyme, 6:30 pm

Next Public Hearing: November 8, 2018, Stamford Government Center, 6:30 pm

“Final Draft” Due March 1, 2019



Connecticut Department of Energy and Environmental Protection

Thanks!

Blue Plan Development Team

- ❖ Emily Hall, NOAA Coastal Fellow
- ❖ Brian Thompson, CT DEEP
- ❖ David Blatt, CT DEEP
- ❖ Mary-beth Hart, CT DEEP
- ❖ Kevin O'Brien, CT DEEP
- ❖ Sylvain DeGuise, CT Sea Grant
- ❖ Ian Yue, CT Sea Grant
- ❖ Nathan Frohling, TNC
- ❖ Christian Fox, TNC

David.Blatt@ct.gov

www.ct.gov/deep/lisblueplan



Connecticut Department of Energy and Environmental Protection