



Climate Change Fueling Surge in
Extreme Rainfall
2



Watershed Mapping Updates
3



Sustainable CT Points for CRS
Communities
4



NEWSLETTER

Summer 2024 | Vol. 11, No. 2

CONNECTICUT ASSOCIATION OF FLOOD MANAGERS

Join Us at Two Roads!

CAFM to Hold Summer Event on Home Elevations and Coastal Wind Damage Mitigation



CONNECTICUT
Association of Flood Managers

The mission of the Connecticut Association of Flood Managers (CAFM) is to promote education, policies, and activities that mitigate current and future flood losses, costs, and human suffering caused by flooding and to protect the natural and beneficial functions of floodplains – all without causing unreasonable adverse impacts.



www.ctfloods.org



contactCAFM@gmail.com

CAFM is pleased to host Wolfe House & Building Movers and Dr. Wei Zhang, PE of the University of Connecticut College of Engineering for a social event and presentation regarding their experiences with home elevations and the mitigation of coastal wind damage in Connecticut. The presentation will also feature input from local and State officials to describe their experiences with elevating structures.

The event will be held at Two Roads Brewing Company, 1700 Stratford Avenue, Stratford, in the Area Two Experimental Brewing Company's Coolship Room, from 4:00pm to 6:00pm on Thursday, July 18, 2024. If you're interested, please register at our website, www.ctfloods.org, under Events.

The cost is \$20 per person. Cash (or Credit Card) bar available (\$6 to \$11 per glass) including beer, hard seltzer, wine, ready-to-drink cocktails, and a small selection of handcrafted cocktails.

CAFM extends a special thank you to GZA Geoenvironmental, and RACE Coastal who have agreed to sponsor food for this event!!!

2.0 CEC units will be offered to CFMs.





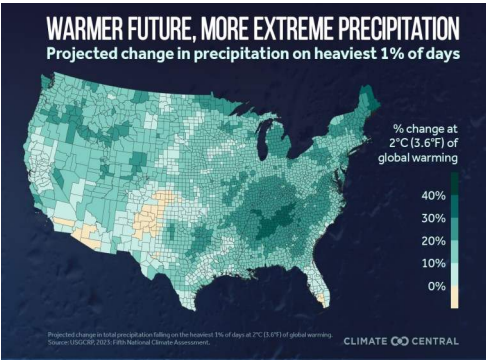
Climate Change Fueling Surge in Extreme Rainfall, Warns Climate Central Study

Climate Central’s recent research highlights a significant trend: severe rainstorms are becoming increasingly common across the United States. This trend is intricately linked to the broader impacts of climate change, with warmer temperatures intensifying the water cycle. As the atmosphere warms, it holds more moisture, leading to more frequent and intense precipitation events. For flood risk management professionals, these findings underscore the urgent need to adapt infrastructure and flood prevention strategies to cope with changing weather patterns.

According to Climate Central’s analysis, the frequency and intensity of extreme precipitation events have risen markedly in recent decades. The report reveals that since the 1950s, the north-eastern United States has experienced a 60% increase in the heaviest rainstorms, while the Midwest has seen a 45% rise. These regions, particularly the Northeast, are projected to continue seeing significant increases in severe rainstorms. This escalation in extreme weather events is not uniform across the country, but certain areas are undeniably more affected.

Some of the greatest increases in heavy rainfall events are expected in the Northeast, Midwest, and Great Lakes regions. Cities like New York, Boston, and Chicago are likely to face more frequent and severe rainstorms, which can lead to urban flooding, overwhelmed stormwater systems, and significant economic and social disruptions. In these densely populated areas, aging infrastructure may be particularly vulnerable, necessitating extensive upgrades.

Traditional stormwater systems, often designed based on historical rainfall data, may no longer be sufficient. Enhanced modeling and mitigation techniques that incorporate future climate projections are crucial for designing resilient infrastructure. This includes expanding stormwater capacity, inte-



grating green infrastructure solutions like permeable pavements and green roofs, and ensuring that floodplain management practices are updated to reflect new realities.

Other key findings:

- ▶ With 2°C (3.6°F) of warming, the majority (85% or 2,645) of the 3,111 total U.S. counties are likely to experience a 10% or higher increase in precipitation falling on the heaviest 1% of days.
- ▶ On average, U.S. counties are likely to experience a 17% increase in precipitation falling on the heaviest 1% of days.
- ▶ Counties likely to experience at least a 30% increase in extreme precipitation are concentrated in: Tennessee, Alabama, Georgia, Mississippi, Maine, North Carolina, and Kentucky.
- ▶ Alaska and Hawaii are likely to experience some of the highest levels of extreme precipitation intensification (43% and 30%, respectively) at 2°C (3.6°F) of global warming.
- ▶ The Southwest may experience more flash floods due to the short bursts of extreme rainfall.

[Read more about the Climate Central research, including downloadable datasets and graphics.](#)

Article reprinted from ASPFM website, <http://www.floods.org>.

2024 CAFM Board of Directors

Raju Vasamsetti, PE, CFM
Chair

Azure Dee Sleicher, PE
Vice-Chair

David Murphy, PE, CFM
Treasurer

Scott Bighinatti, CFM
Secretary

Richard Dmochowski
Diane Ifkovic
Janice Plaziak, PE
Paul Sotnik, PE
John Truscinski, CFM
At-Large

Douglas Colter, CFM
Chairman Emeritus

Committees

Communications Joe Canas, PE, CFM

Events Diane Ifkovic

Membership Scott Bighinatti, CFM

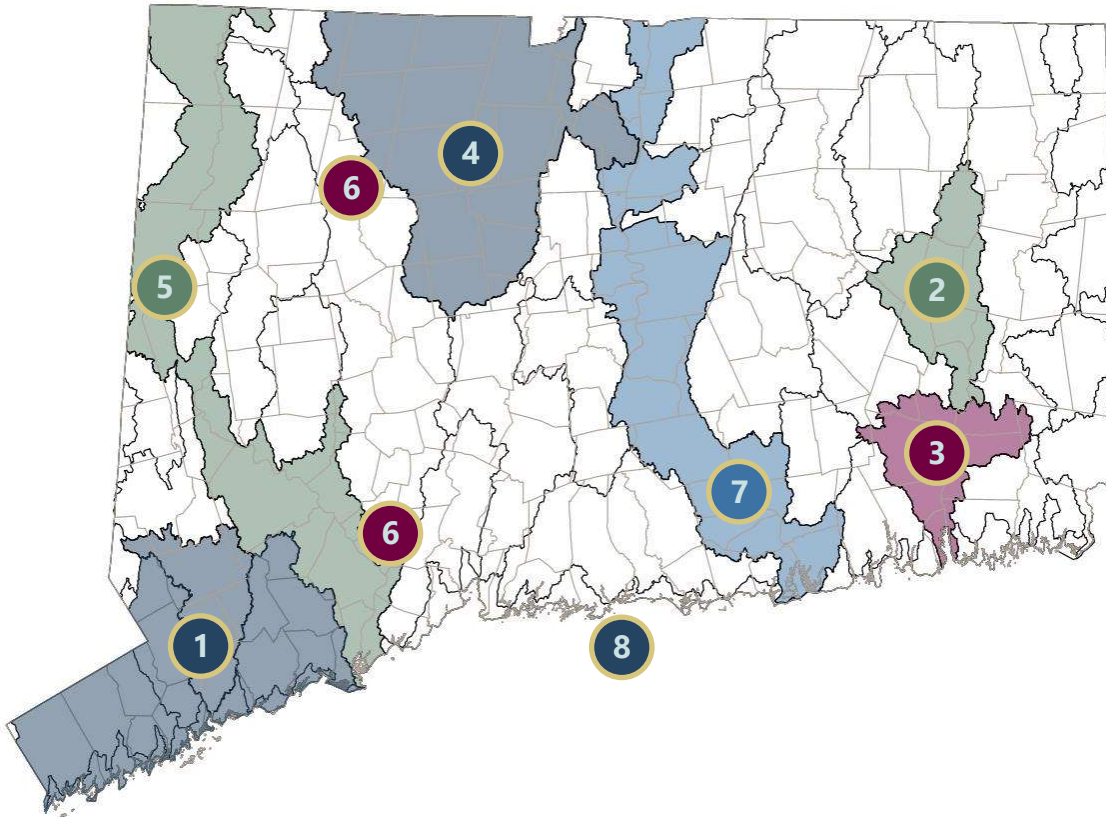
CAFM Welcomes New Board Member

CAFM welcomes our newest At-Large Board Member, Janice Plaziak. Janice is currently the Town Engineer in Guilford, having previously served in as the Town Engineer in Branford. Janice brings a wealth of experience from coastal municipalities, and we are all excited to have her serve on the Board.

Janice is taking the place of Meredith Badalucca, who stepped down due to other commitments. CAFM thanks Meredith for her service to the organization.



Connecticut Watershed Mapping Updates



1

Saugatuck & Southwestern Connecticut

90-day appeal period ended on May 16, 2024. FEMA currently addressing appeals received. Letter of Final Determination (LFD) scheduled for May 2025. Effective maps and studies scheduled for November 2025.

2

Shetucket River

Shetucket - Preliminary flood maps and studies scheduled for release October 18, 2024.

3

Thames River

Preliminary flood maps and studies scheduled for release October 18, 2024.

4

Farmington River

Hartford County: 90-day appeal period ended May 28, 2024. FEMA currently addressing appeals received. Letter of Final Determination (LFD) scheduled for May 2025. Effective maps and studies scheduled for November 2025. Litchfield County: Preliminary flood maps and studies scheduled for release July 27, 2024.

5

Housatonic River

Draft work maps scheduled for release January 28, 2025.

6

Naugatuck River Levee Analysis & Mapping Procedure

Ansonia and Derby: Initial meeting for stakeholders was held on March 22, 2023. A second meeting was held on September 28, 2023 and a third meeting was held on February 6, 2024. Torrington: the initial meeting for stakeholders was held on March 19, 2024. This LAMP study will be incorporated into the Housatonic River watershed study. Field work and data collection will occur during the spring and summer of 2024, with a second meeting anticipated in the autumn of 2024.

7

Lower Connecticut

Draft Work maps scheduled for release to communities in August 6, 2024.

8

Connecticut Coast

FEMA will initiate a coastal re-study in Autumn 2025. The Coastal Erosion Study has been completed.

News Briefs



FEMA

FEMA Region I office implemented a coastal erosion hazard study for the region that covered the New England coastline.

To help identify the risks to New England communities, FEMA launched the [FEMA Region I Coastal Erosion Hazard Map Viewer](#) on an ArcGIS platform for users to view current and projected erosion hazards for 2030, 2050, and 2100, incorporating long-term historical erosion rates and impacts of future sea level rise. The viewer and its contents are a non-regulatory product to communicate potential future coastal erosion hazards to inform planning and mitigation efforts to floodplain management professionals and coastal homeowners alike.



The National Flood Insurance Program (NFIP) has developed or updated several publications that provide valuable information to policyholders, consumers and survivors. Printed copies of many of these publications are available to order from FEMA's Publications Warehouse. Publications can be obtained through the NFIP Publications Order Form: floodsmart.gov/puborderform.



On April 23rd, HUD published a Final Rule in the Federal Register to better protect communities and taxpayer-funded investments from flooding. This Rule amends HUD's existing floodplain regulations to require a greater level of flood protection for new construction and substantial rehabilitation projects. Building to this standard will increase the Nation's resilience to flooding, reduce the risk of flood loss to human life and property, and minimize the direct impact of floods on households across the country.

Sustainable Connecticut Points for CRS Participation



Sustainable CT is a voluntary certification program, providing a menu of sustainability actions that build local economies, support equity, and respect the finite capacity of the environment. The program recognizes and certifies municipalities for their actions and achievements.

In 2024, the Sustainable CT program added a new Action under the category of Action Benefit 5. Dynamic and Resilient Planning:

Action 5.9 Participate in the National Flood Insurance Program's Community Rating System (CRS).

New Action 5.9 provides 20 points under the Sustainable CT program for communities that participate in the NFIP Community Rating System (CRS) program with a Class Rating ranging from 9 to 1. CRS communities can apply for these additional 20 points during a future Sustainable CT cycle certification.

Connecticut currently has 14 communities that participate in CRS. The CRS program provides discounts on flood insurance to policyholders in participating communities (Class 9 = 5% discount, Class 8 = 10% discount, Class 7 = 15% discount).

Article reprinted from "The Torrent", Spring 2024.

Save the Date!
CAFM will hold its 2024 Annual Conference at Central Connecticut State University on November 13.

CAFM by the Numbers

111 **29**



Members



NFIP Jurisdictions

Our Sponsors



Note: Sponsorship of CAFM does not imply an endorsement by CAFM of a particular firm or product.