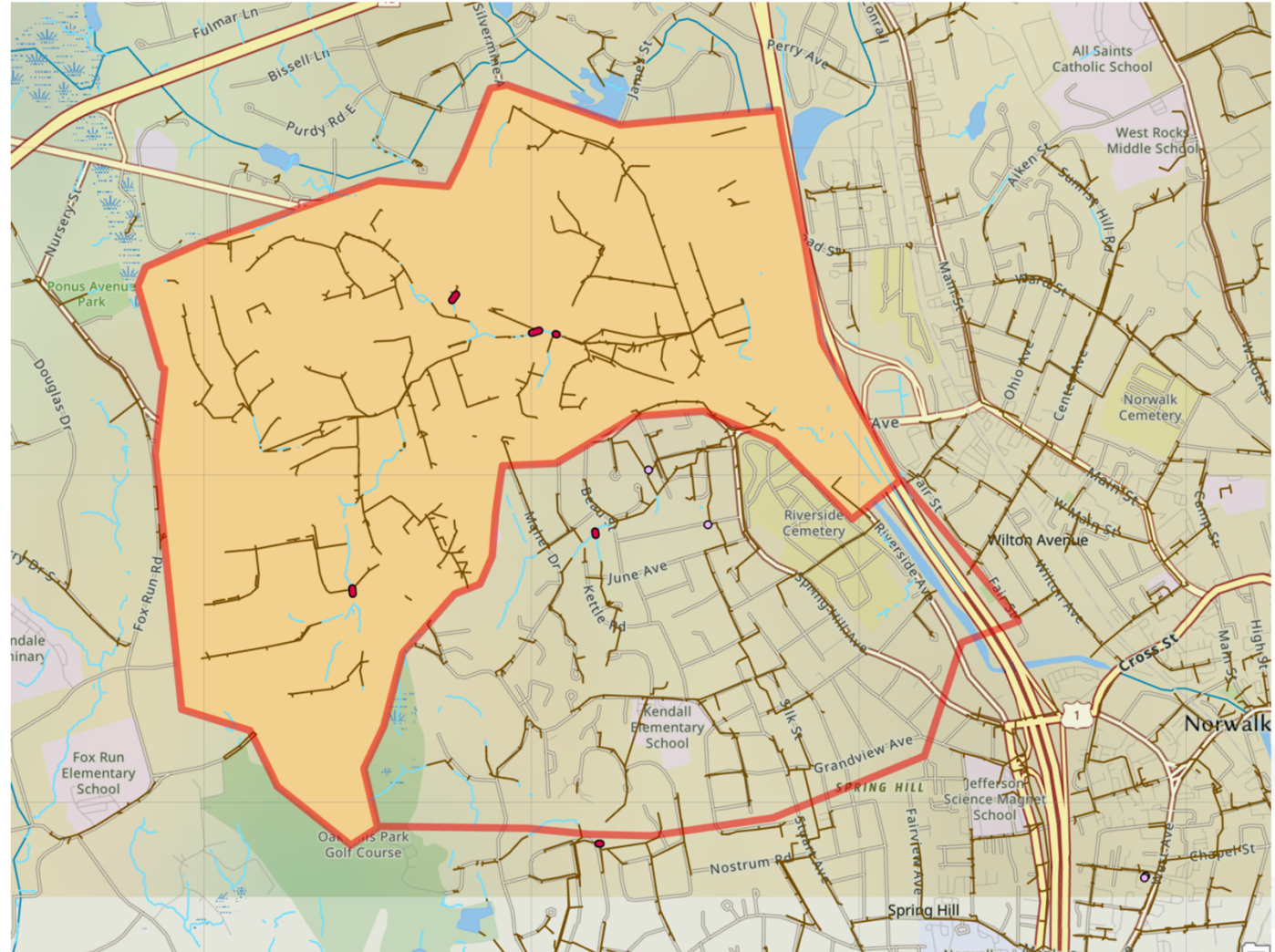


Study 3, Basin Expansion

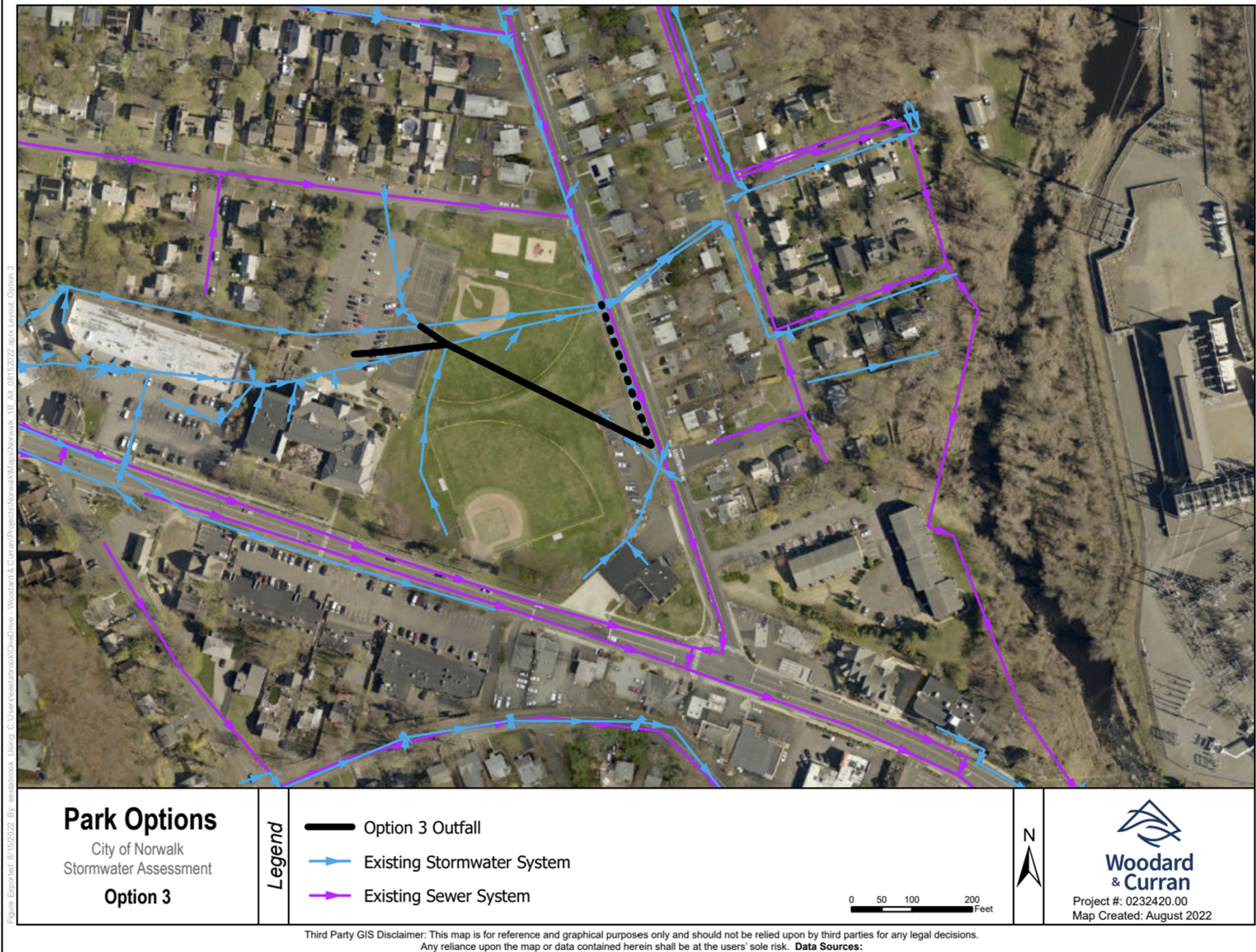
Expand study to the Southeast to better understand hillside flow improvement on off study system.

Add 0.7 square miles

Add several hundred feet of drainage system and ditches.



Study 4, Ball Field Renovation



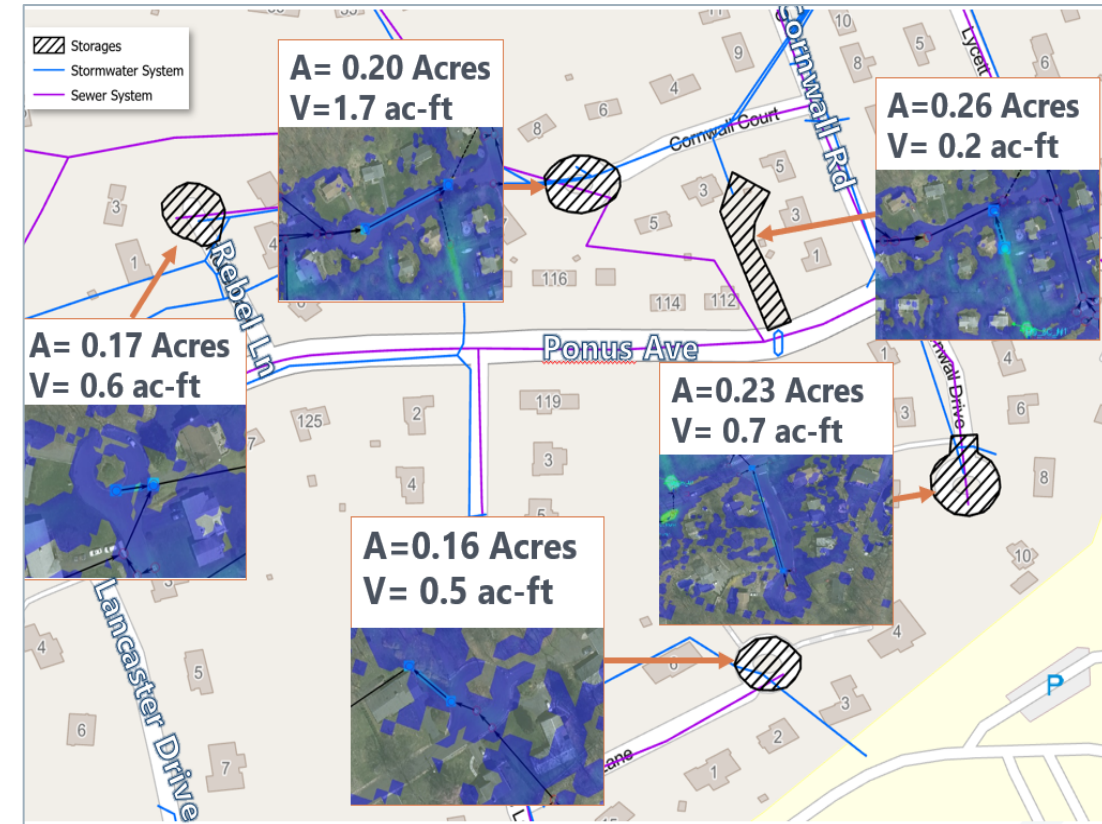
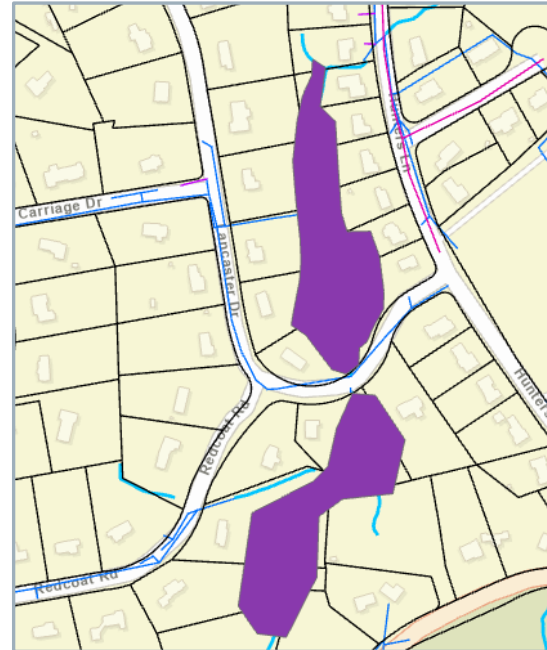
Study 5, The Hole North of Cornwall Road



Opportunity for natural storage.

Evaluative outfall options.

Versatility & Flexibility



Consider Distributing Storage

Efficiencies and Economies of Scale

| | Original Study | Study 2 | Study 3 | Study 4 | Study 5 |
|--------------------|----------------|---------|---------|---------|---------|
| Est. Effort Hours | 360 | 96 | 30 | 24 | 24 |
| Projects | 3 | 4 | 1 | 1 | 1 |
| Total Hours | 360 | 456 | 486 | 510 | 534 |
| Effort per Project | 120 | 66 | 61 | 57 | 54 |



Questions?

Vanessa Valadares, P.E.

Chief of Public Works & Operations
City of Norwalk, Connecticut

Vvaladares@norwalkct.gov

Joseph C. Kirby, P.E. CFM

Senior Technical Leader
Woodard & Curran

jkirby@woodardcurran.com

